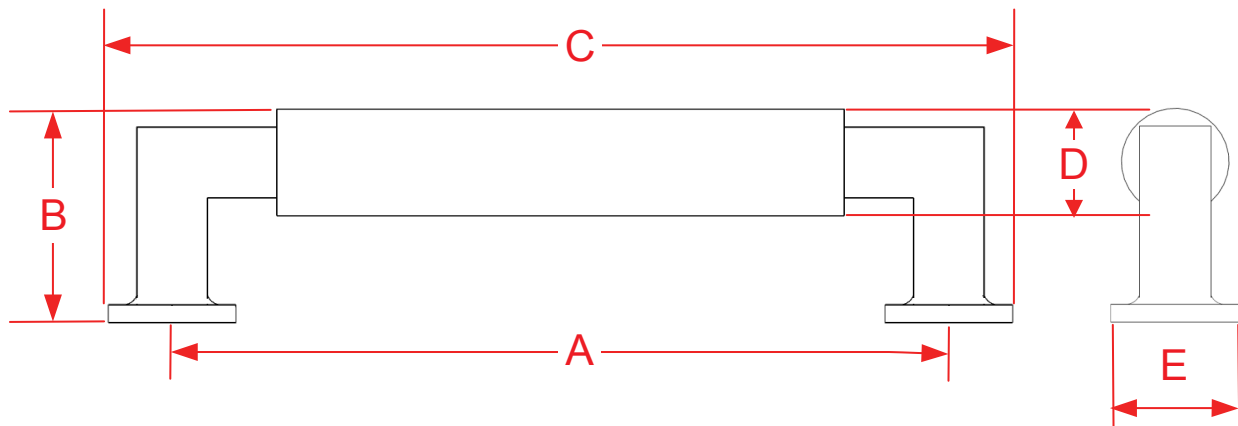


1360, 1361, 1362 & 1363 Series Cabinet, Appliance, Shower & Door Pulls

Finishes for Life
FINISH-FREE GUARANTEED



Part #	A Center to Center	B Projection	C Overall	D Barrel Diameter	E Base
1360-4	4.0000"	1.3750"	4.7500"	0.6250"	0.7500"
1360-5	5.0000"	1.3750"	5.7500"	0.6250"	0.7500"
1360-6	6.0000"	1.3750"	6.7500"	0.6250"	0.7500"
1360-8	8.0000"	1.3750"	8.7500"	0.6250"	0.7500"
1360-10	10.0000"	1.3750"	10.7500"	0.6250"	0.7500"
The 1360 is offered in custom sizing up to 30 3/4" overall					
1361-6	6.0000"	1.5000"	6.8750"	0.7500"	0.8750"
1361-8	8.0000"	1.5000"	8.8750"	0.7500"	0.8750"
1361-10	10.0000"	1.5000"	10.8750"	0.7500"	0.8750"
1361-12	12.0000"	1.5000"	12.8750"	0.7500"	0.8750"
1361-18	18.0000"	1.5000"	18.8750"	0.7500"	0.8750"
The 1361 is offered in custom sizing up to 30 7/8" overall				Page 1 of 2	

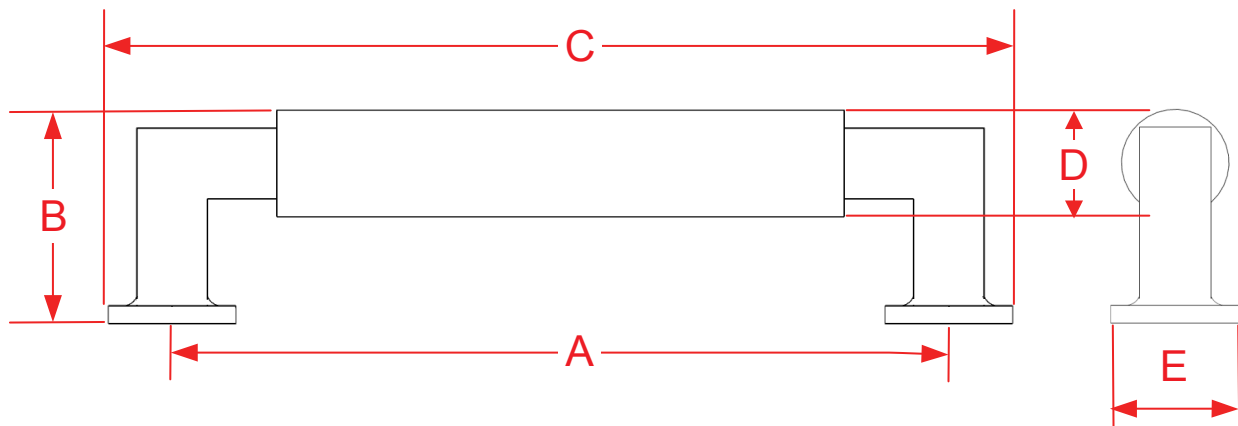


Manufacturing Fine Architectural Hardware
in the USA Since 1927



1360, 1361, 1362 & 1363 Series Cabinet, Appliance, Shower & Door Pulls

Finishes for Life
TARNISH-FREE GUARANTEED



Part #	A Center to Center	B Projection	C Overall	D Barrel Diameter	E Base
1362-8	8.0000"	2.0625"	9.1250"	1.0000"	1.1250"
1362-10	10.0000"	2.0625"	11.1250"	1.0000"	1.1250"
1362-12	12.0000"	2.0625"	13.1250"	1.0000"	1.1250"
1362-18	18.0000"	2.0625"	19.1250"	1.0000"	1.1250"
The 1362 is offered in custom sizing up to 31 1/8" overall					
1363-12	12.0000"	2.4375"	13.3750"	1.2500"	1.3750"
1363-18	18.0000"	2.4375"	19.3750"	1.2500"	1.3750"
1363-24	24.0000"	2.4375"	25.3750"	1.2500"	1.3750"
1363-30	30.0000"	2.4375"	31.3750"	1.2500"	1.3750"
The 1363 is offered in custom sizing up to 31 3/8" overall				Page 2 of 2	



Manufacturing Fine Architectural Hardware
in the USA Since 1927

